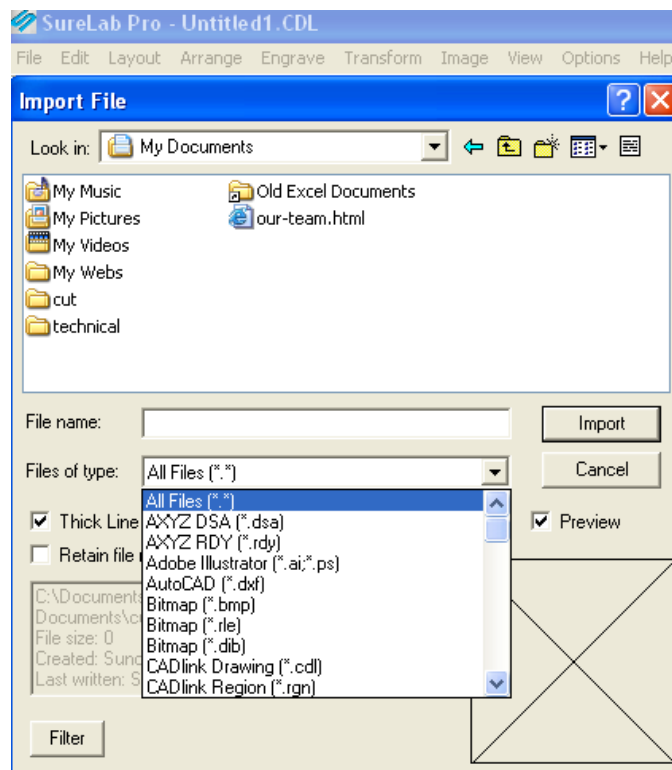


SUREGRAVE®

TECHNICAL SUPPORT SERVICE

Importing Pictures to Surelab

1. Select the picture you want to import into the software; it is best to use black and white images although colour images can be used.
2. Open Surelab and click File and Import, a prompt box will open on your screen



3. Select the picture you want to import by left clicking on the picture and then click import, an upside down L will appear on the screen instead of the cursor arrow, left click where you want the image to go.
4. If your image is colour you will need to highlight the image and left click on Image → Mode → Monochrome. (If you are using a Black and White Image jump to point 6)

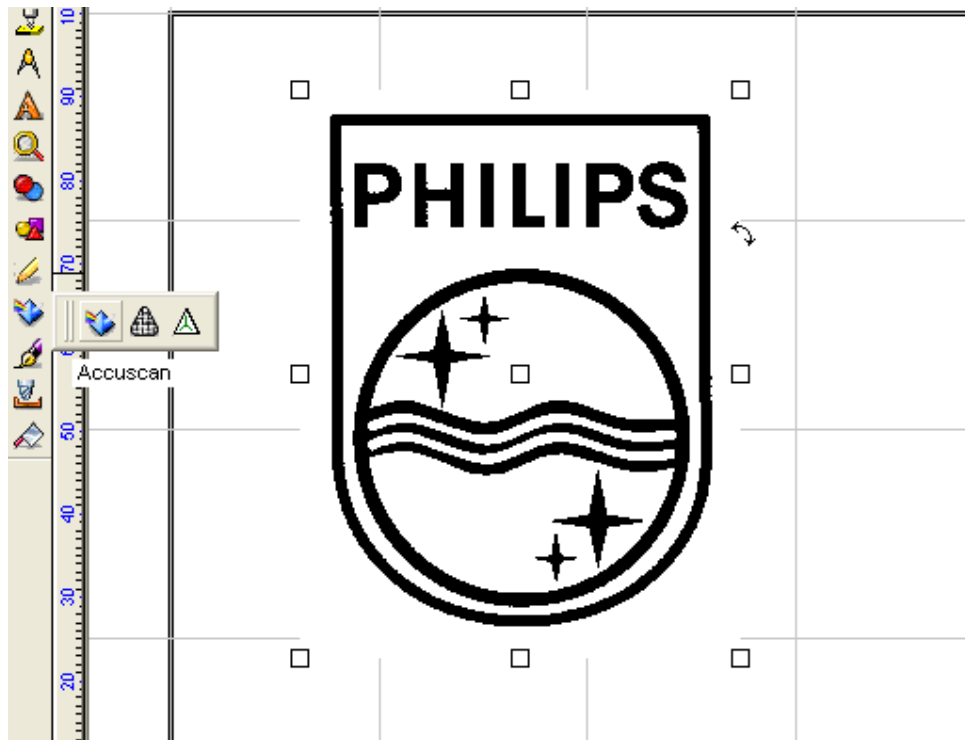
<mailto:service@suregrave.com>

www.suregrave.com/technical.htm

SUREGRAVE®

TECHNICAL SUPPORT SERVICE

5. This turns the picture black and white. (You may notice loss of detail doing this, try converting the picture to black and white prior to importing it into Surelab)
6. Highlight the picture; on the left side of the screen there are a number of icons, select the Scan tools, then Accuscan.



7. Once this has been clicked a new menu box appears at the top of the screen.



8. With this new menu, in the top right corner there are two icons, when you move your mouse over them they read Vectorization and Trace Setup.
9. Left click on Vectorization and a bar at the bottom of the screen builds up until the image has been vectorized.

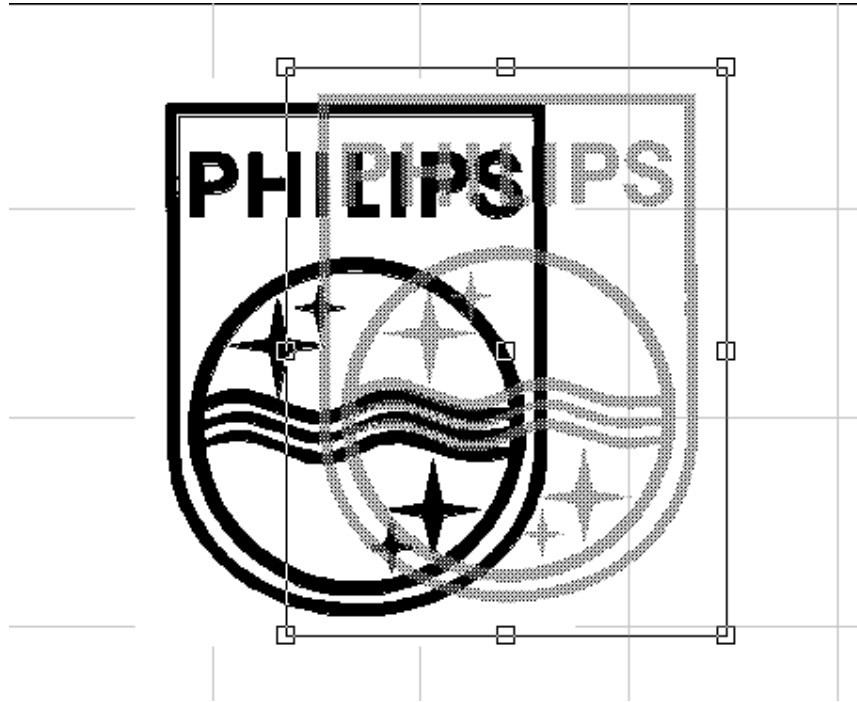
<mailto:service@suregrave.com>

www.suregrave.com/technical.htm

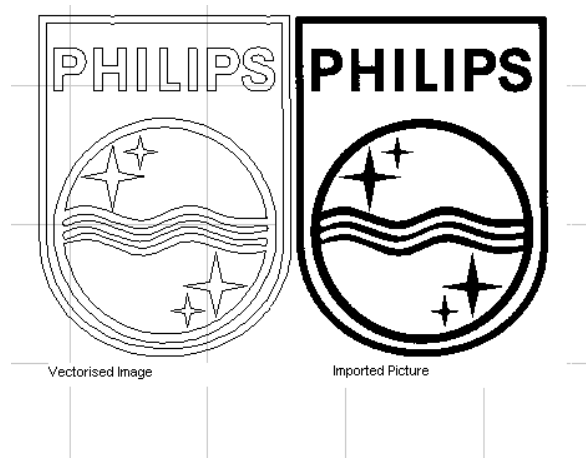
SUREGRAVE®

TECHNICAL SUPPORT SERVICE

- Click close on the vector menu; you should now see your picture with 9 little squares around it. Hold your left mouse button down over the centre square and proceed to drag the image to the right of the screen.



- Release the left mouse button; you now have 2 images on the screen.

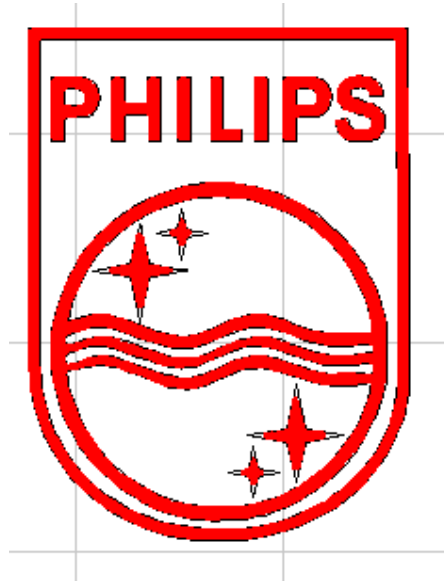


<mailto:service@suregrave.com>

www.suregrave.com/technical.htm

TECHNICAL SUPPORT SERVICE

12. You can now delete the Imported image, as we can now use the vectorised image to engrave.
13. If you want to add a fill tool path, highlight the vector and go to Arrange→ Connect path, this brings up a prompt box, click ok.
14. Now apply your fill to the vector.



<mailto:service@suregrave.com>

www.suregrave.com/technical.htm